

GENESIS3L

80~200W LINEAR HIGHBAY LED Lighting



Key Features:

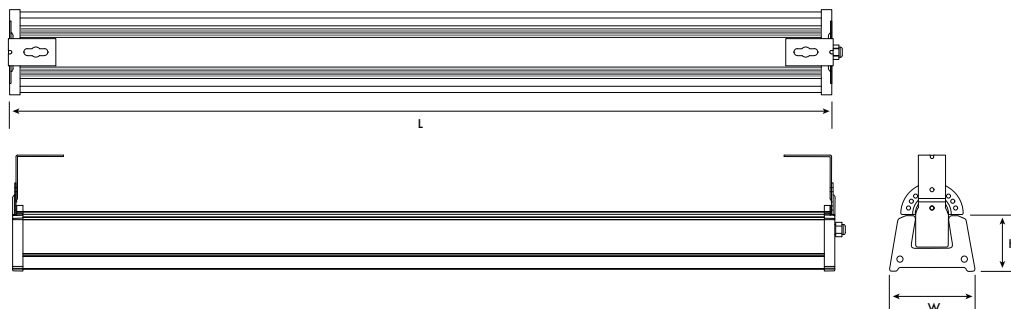
- Aluminium housing
- Powder coated finish
- Instant start with no flickering
- Energy saving & low maintenance costs
- Luminous flux efficiency >110lm/W
- Long life ~ up to 50k hours
- Optional DALI, 1-10V dimmable LED driver
- IP65 rated
- Greater energy saving with optional microwave sensors
- Optional emergency pack
- High efficiency using Philips LumiLEDs LED chip and reflector system



GENESIS3L SPECIFICATION

Part Code	GEN3L-9400	GEN3L-14400	GEN3L-18300	GEN3L-23000
Input Voltage	220-240V	220-240V	220-240V	220-240V
Power frequency	50/60Hz	50/60Hz	50/60Hz	50/60Hz
Chip Power Consumption	76W	115W	154W	192W
Full Power Consumption	80W	120W	160W	200W
Power Factor	≥0.95	≥0.95	≥0.95	≥0.95
Total Lumens	10460lm	15670lm	20940lm	26680lm
Lumens per circuit watt (±5%)	130lm/W	130lm/W	130lm/W	133lm/W
Beam Angles	90°/30°x70°/40°x130°	90°/30°x70°/40°x130°	90°/30°x70°/40°x130°	90°/30°x70°/40°x130°
Colour (K)	5000	5000	5000	5000
CRI	>82	>82	>82	>82
Service Life	50000+ hrs	50000+ hrs	50000+ hrs	50000+ hrs
Housing Body	Extruded Aluminium	Extruded Aluminium	Extruded Aluminium	Extruded Aluminium
Housing Finish	Powder Coated - grey	Powder Coated - grey	Powder Coated - grey	Powder Coated - grey
Lens	Polycarbonate	Polycarbonate	Polycarbonate	Polycarbonate
Mounting	Adjustable Angle Bracket	Adjustable Angle Bracket	Adjustable Angle Bracket	Adjustable Angle Bracket
AC Input Cable	1500mm H05RN F core: 3x1.0mm ²			
Working Temperature	-20°C ~ +40°C	-20°C ~ +40°C	-20°C ~ +40°C	-20°C ~ +40°C
Ingress Protection (IP)	Tested to IP65	Tested to IP65	Tested to IP65	Tested to IP65
Weight	4.1kg	5.2Kg	6.6Kg	7.8Kg
Dimensions	L627 x W126 x H97mm	L923 x W126 x H97mm	L1220 x W126 x H97mm	L1516 x W126 x H97mm

Mechanical Diagrams



PowerLed
Orion House
Calleva Park
Aldermaston
Berkshire
RG7 8SN

Contact:
Tel: 0118 9703856
enquiries@powerled.uk.com
www.powerled.uk.com

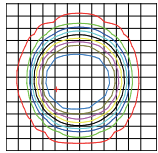


GENESIS3L

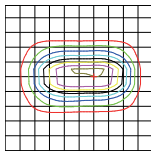


80~200W LINEAR HIGHBAY LED Lighting

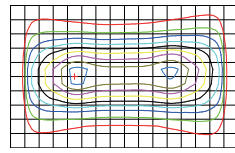
Lens Variants



90°



30° x 70°



40° x 130°

Lens Variants

GEN3L-xxxx-90	~ 90° Lens
GEN3L-xxxx-30x70	~ 30° x 70°
GEN3L-xxxx-40x130	~ 40° x 130°

Available Variants (Not available for 81W)

GEN3L-xxxx-YY-DA	DALi Dimming	(not available on the 121W version)
GEN3L-xxxx-YY-1-10V	1~10V Dimming	
GEN3L-xxxx-YY-MS	Microwave On/Off Sensor	
GEN3L-xxxx-YY-DHCF	Microwave Daylight Harvesting & Corridor Function	
GEN3L-xxxx-YY-EP10	3HR Emergency Light Conversion (External Fitting - Non IP Rated)	

XXXX = Lumens YY = Lens Example: GEN3L-23000-40x70-EP10



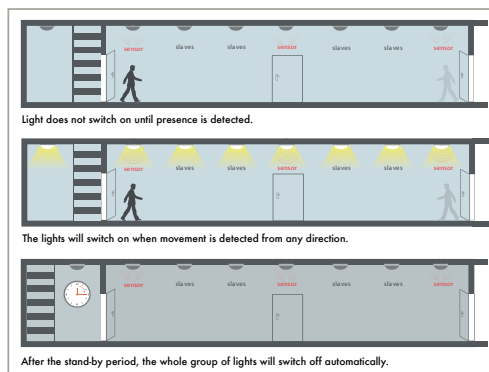
Microwave On/Off and corridor function Sensor.



Microwave On/Off and daylight harvesting Sensor.

GENESIS3L Microwave Sensors ~ MS

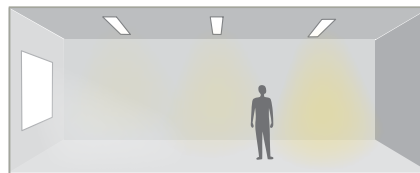
The GENESIS3L is available with a motion sensor switch as an optional extra. (The motion sensor detects movement to turn on and turns off after a pre-selected hold-time, when there is no further movement.) A daylight sensor is also incorporated to switch off the light when there is sufficient natural light.



GENESIS3L Microwave Sensors ~ DH & CF

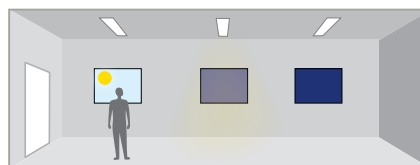
Featuring the innovative Daylight Harvesting Sensor and Corridor Function with our GENESIS3L range, controlling your application has become even easier. With the corridor function built in, it is automatically enabled with no additional commissioning effort required. Including a remote to control your functions for dimming and luminous output, users may choose between using pre-set lighting profiles for everyday use, or programming of custom light levels and sequences individually.

Day Light Harvesting



Light will switch on when movement is detected and/or if natural light is insufficient. The sensor will adjust brightness levels according to natural light while the room is occupied.

Corridor Function



Light will switch off if natural light is sufficient; and then also dim to the selected minimum level when the room isn't occupied, switching off when the selected standby period has passed.

PowerLed
Orion House
Calleva Park
Aldermaston
Berkshire
RG7 8SN

Contact:
Tel: 0118 9703856
enquiries@powerled.uk.com
www.powerled.uk.com



GENESIS3L



Testing & Certification

The GENESIS3L floodlight has been extensively tested to the following criteria:-

Salt Spray Test

IEC 60068-2-52 specifies the application of the cyclic salt mist test to components or equipment designed to withstand a salt-laden atmosphere as salt can degrade the performance of parts manufactured using metallic and/or non-metallic materials.

International Protection (IP) Rating

IEC 60529, sometimes interpreted as Ingress Protection Marking, classifies and rates the degree of protection provided against intrusion (body parts such as hands and fingers), dust, accidental contact, and water by mechanical casings and electrical enclosures. It is published by the International Electrotechnical Commission (IEC). The equivalent European standard is EN 60529.

Impact Protection Rating

The European standard EN 62262 – the equivalent of international standard IEC 62262 (2002) – relates to IK ratings. This is an international numeric classification for the degrees of protection provided by enclosures for electrical equipment against external mechanical impacts. It provides a means of specifying the capacity of an enclosure to protect its contents from external impacts.

CE Certificate of Conformity

CE marking is a certification mark that indicates conformity with health, safety, and environmental protection standards for products sold within the European Economic Area (EEA). This also includes EMI, EMS, Low Voltage Directive and Energy Related Products Directive.

ECA compliance Certificate

Photometric Reports

Driver Data

Philips LumiLEDs Chip data

Copies of these certificates and reports are available upon request.