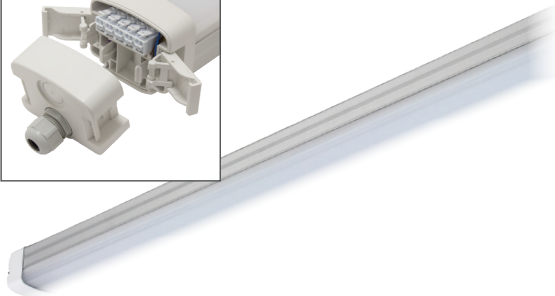
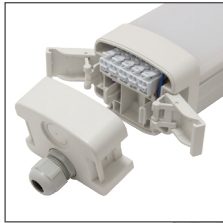


REVO-IP-REV-D



22~60W LED Batten Light



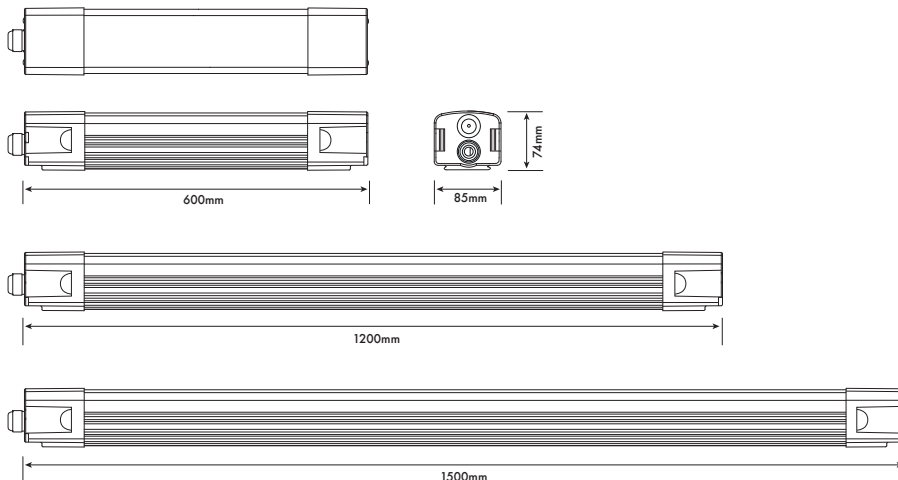
Key Features:

- 120° Light distribution
- Up to 118Lm/M
- Toolless cabling for easy installation
- Ultra robust aluminium design
- IP65 Ingress protected
- Excellent optical design
- Long service life
- Uses less power than fluorescent alternatives
- Easy fix brackets for faster installation
- 3 hour emergency option available

REVO-IP SPECIFICATION

Part Number	RV2-IP-2600-4K-REV-D	RV4-IP-4625-4K-REV-D	RV5-IP-6850-4K-REV-D
Fitting Colour	Aluminium & Grey	Aluminium & Grey	Aluminium & Grey
Power	22W	40W	60W
Power Factor	>0.95	>0.95	>0.95
Input Voltage	90 ~ 277VAC	90 ~ 277VAC	90 ~ 277VAC
Colour (K)	4000K	4000K	4000K
Lumens	2600lm	4625lm	6850lm
Lumen Field Angle	120°	120°	120°
Impact Protection	IK10	IK10	IK10
Working Temperature	-15 ~ +50°C	-15 ~ +50°C	-15 ~ +50°C
CRI	>80%	>80%	>80%
Dimensions	600 x 85 x 74mm	1200 x 85 x 74mm	1500 x 85 x 74mm

Mechanical Diagrams



PowerLed (UK) Ltd
Orion House
Calleva Park
Aldermaston
Berkshire
RG7 8SN

Contact:
Tel: 0118 9703856
enquiries@powerled.uk.com
www.powerled.uk.com



REVO-IP-REV-D

22~60W LED Batten Light



Emergency Options

RV2-IP-2600-4K-REV-D-EP3	Emergency
RV4-IP-4625-4K-REV-D-EP3	Emergency
RV5-IP-6850-4K-REV-D-EP3	Emergency

Photometrics

