

# LED Light Bars - AC LIGHTSTICK

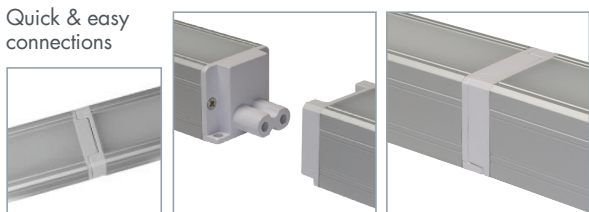
Slimline AC input LED LIGHTSTICK suitable for cabinet lighting and display lighting. Easily connected in series up to 10M.



## LED AC Lightstick

Part Code	LS450W	LS450C
Lumen Output	320lm	450lm
Input Voltage	100~240V	100~240V
Power	5W	5W
LED Qty	24	24
CCT	2700~2900K	6000~6500K
Dimensions	450 x 30 x 25mm	

Quick & easy connections



2700~2900K



6000~6500K

### Included Accessories:

- 2 x 90° Plastic mounting clips
- 2 x 45° Plastic mounting clips
- 10 x screws

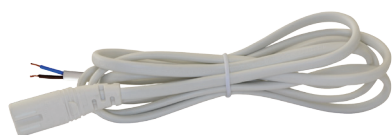


Mounting Clips



## LED LIGHTSTICK Accessories

Part Code	LSAC1.5M	LSC150mm	LSC1M	LSSW
Accessory	1.5M AC Input Cable	Short Interconnect Cable	Long Interconnect Cable	Input Switch
Dimensions	1500mm	150mm	1000mm	-



LSAC1.5M



LSC150mm



LSC1M



LSSW

## IP Ratings explained



IP41 rated ~ Protected from granular foreign bodies >1mm.  
Protected against vertically dripping water.

