

ORRA-EVO

LED Vapour Proof Batten



Product Features

- New body design with increased internal space for better cable management
- Integrated Gear Tray and Polycarbonate (Opal) Diffuser makes installation easier and less prone to handling damage
- Operates with a relocatable, flicker-free, metal frame TRIDONIC driver with dip-switch selectable power
- 11 Knock-Out points for AC entry, including ends
- 4 Way Push-Fit Terminal Block for fast installation, relocatable to help with AC entry
- Locking clips have a self-supporting mechanism that allows them to remain in an open position during installation
- Plug and Play Emergency Kit & Microwave Motion Sensor upgrade option
- Manufactured in accordance to BS EN 60598-1



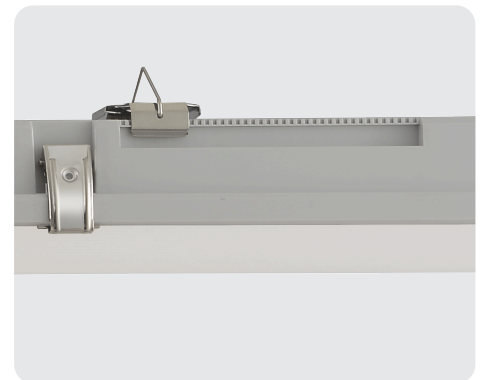
Flicker-Free Metal Frame Driver

Delivers stable, flicker-free light with durable metal housing for improved heat dissipation and reliability.



Lockable Clips in Open Position

Drastically improve installation and maintenance speed with high-strength lockable clips and diffuser harnesses, making one-person installation safer and faster.

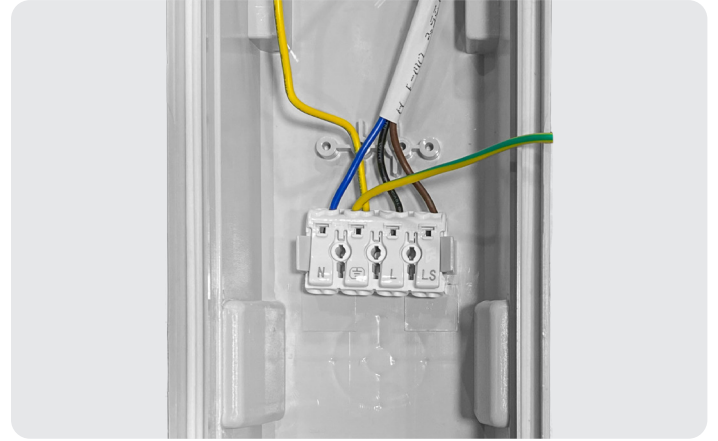
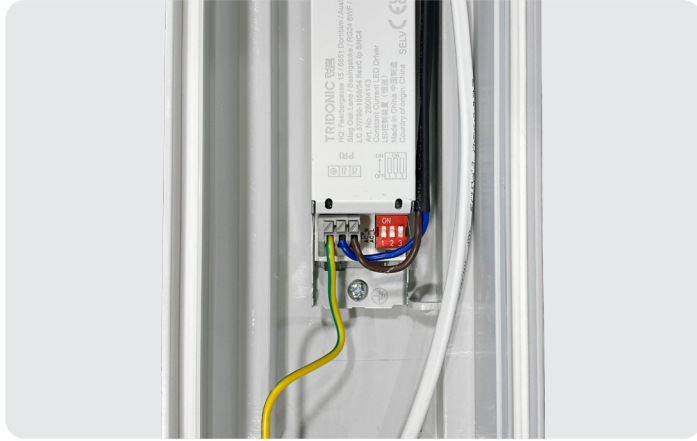


Mounting Rail for Surface Clips

Allows wide adjustment of clip positions for flexible, precise mounting without extra drilling.

ORRA-EVO

LED Vapour Proof Batten

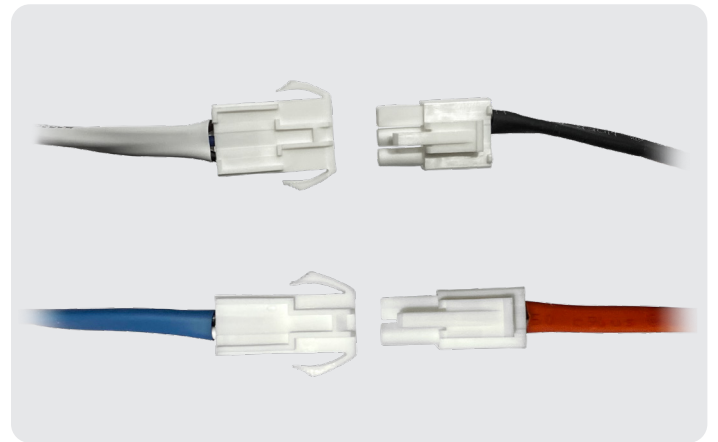


Selectable Power via Dip-Switch

Selectable power enables on-site configuration to suit varied lumen requirements and installation types.

4 Way Push-Fit Terminal Block

Offers flexible loop-in/loop-out functionality, enabling quick connection of up to 20 units in series



Multiple Cable Entries

11 knock-outs for flexible cable entry and multi-gland options, simplifying installation across varied site layouts.

Plug & Play System




Driver, emergency pack and microwave sensor all feature plug & play connectivity, simplifying installation and reducing on-site wiring time.

Applications

Ideal for corridors, warehouses, car parks, workshops, industrial and commercial settings.



Specification

			
Input Voltage	220-240VAC	220-240VAC	220-240VAC
Frequency	50/60Hz	50/60Hz	50/60Hz
Wattage (Selectable)	22W – 28W – 34W – 40W	40W – 45W – 50W	40W – 45W – 50W – 60W
Lumen Output	3100 – 5600lm	6720 – 8400lm	6400 – 9600lm
Power Factor	>0.96	>0.96	>0.96
Efficacy	150lm/W	168lm/W	160lm/W
CCT	4000K	4000K	4000K
Beam Angle	120°	120°	120°
CRI (Ra)	>80	>80	>80
IP Rating	IP65	IP65	IP65
IK Rating	IK08	IK08	IK08
Operating Temperature	0°C ~ +40°C	0°C ~ +40°C	0°C ~ +40°C
Case Material	Polycarbonate	Polycarbonate	Polycarbonate
Diffuser Material	Polycarbonate (Opal)TP(b)	Polycarbonate (Opal)TP(b)	Polycarbonate (Opal)TP(b)
Dimensions	1240 x 102 x 85mm	1540 x 102 x 85mm	1840 x 102 x 85mm

Part Codes

PLI12HL-T	4ft LED Batten
PLI15HL-T	5ft LED Batten
PLI18HL-T	6ft LED Batten
PLI12HL-T-EM	4ft LED Batten with Emergency Kit (3hr)
PLI15HL-T-EM	5ft LED Batten with Emergency Kit (3hr)
PLI18HL-T-EM	6ft LED Batten with Emergency Kit (3hr)
PLI12HL-T-MS	4ft LED Batten with Microwave Motion Sensor
PLI15HL-T-MS	5ft LED Batten with Microwave Motion Sensor
PLI18HL-T-MS	6ft LED Batten with Microwave Motion Sensor
PLI12HL-T-MS-EM	4ft LED Batten with Microwave Motion Sensor and Emergency Kit
PLI15HL-T-MS-EM	5ft LED Batten with Microwave Motion Sensor and Emergency Kit
PLI18HL-T-MS-EM	6ft LED Batten with Microwave Motion Sensor and Emergency Kit
PLI-GD-EM203S	Emergency Kit (plug & play)
PLI-MC130S	Microwave Motion Sensor (plug & play)